

CALIBRATION

The RT200 is supplied fully calibrated with a full certificate of calibration provided.

To meet the requirement of HACCP it is recommended to check the calibration at regular intervals between its yearly calibration, which Reitech will notify you when due.

To check the calibration follow the following instructions, no special equipment is required.

0°C

- Crush some ice cubes and place them in a wide neck thermal flask or other insulated container.
- Add drinkable water to the ice to create a slush mixture, there must be solids of ice present at all times, so add more crushed ice as necessary.
- Insert the probe of the thermometer into the mixture and stir gently using the probe, allow 2 – 3 minutes and record the reading

This single point test is sufficient to show up any faults or inaccuracies as all the readings are referenced to this 0°C point.

You should find the readings are within $\pm 0.5^{\circ}\text{C}$.

Warranty

This instrument is warranted against faulty workmanship and component failure for a period of 12 months from date of purchase.

Probes are warranted for a period of 6 months from date of purchase against manufacturing defects.



Reitech Instrumentation Ltd

Culfore
Mountpleasant
Dundalk
Co Louth
Ireland

Tel: ++353 (0)42 9371043

Fax: ++353 (0)42 9371056

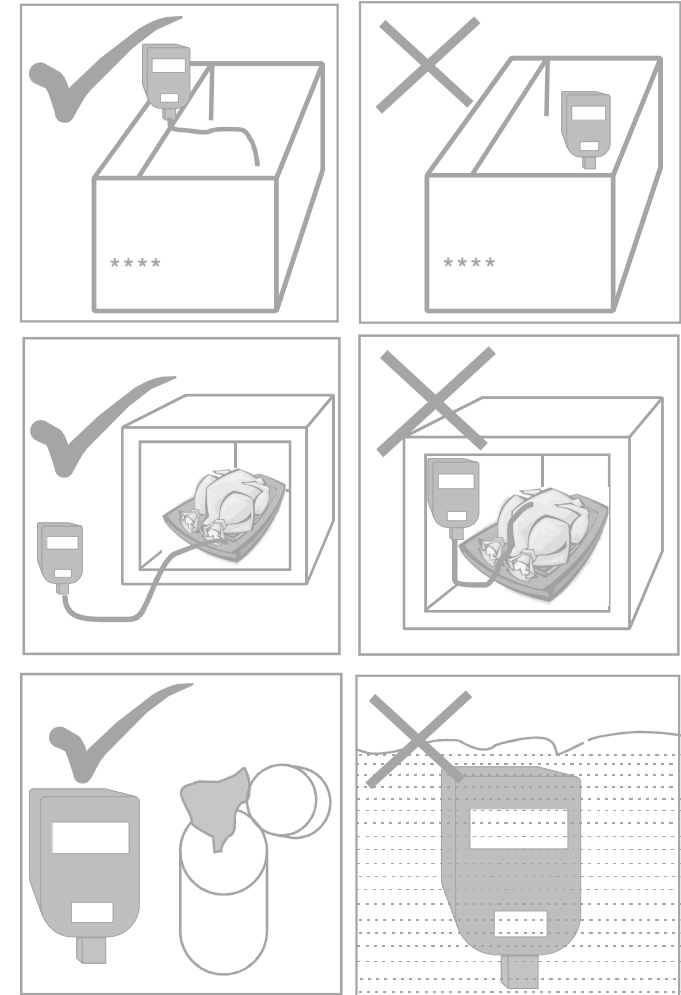
Email: info@reitechltd.com

Web: www.reitechltd.com

ReiTech

Instrumentation Ltd

RT200 Operating Instructions



www.reitechltd.com

Operation

To fit the probe simply plug it into the socket at the bottom of the thermometer, Observing the correct polarity – one pin is smaller than the other and cannot be incorrectly inserted.
Temperature is displayed in Degrees Celsius

To Switch On

Simply press the green button located at the side of the thermometer.

To Switch Off

The RT200 will switch itself off after approx. 3 mins

Battery Replacement

This thermometer uses a standard 9v PP3 or MN1604 Battery which can be easily replaced.

When **Lo Bat** shows on the display the battery needs to be replaced immediately as the readings will no longer be accurate.

To replace the battery,

First remove the 4 screws at the back of the thermometer, the screws are securing a cover plate, Pop up the plate and you will see the battery.,
Fit the new battery observing the correct polarity as indicated.
Replace the cover plate and refit the screws.

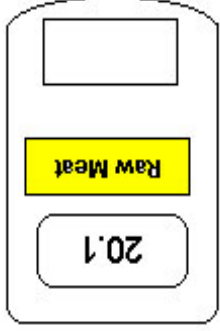
Colour Coded Labels

Colour coded labels are provided to give you the option of dedicating the thermometer for use on one specific food type.

Fit the label of your choice centred between the calibration label and the display as per the following illustration.

If the thermometer has already been in use then clean and degrease the surface before applying the label.

See the "Probe Instructions" (separate leaflet) for fitting labels to the probes.



SPECIFICATION

- Measuring range is -60.0°C to 199.9°C
- This thermometer has been designed to deliver a worst case accuracy of $\pm 0.5^{\circ}\text{C}$ in combination with Reitech probes only, across a temperature range of -25.0°C to $+110^{\circ}\text{C}$. This statement is backed up by the provision of a certificate of calibration with each thermometer.

CARE OF THIS PRODUCT

From time to time, check that the pins on the plug do not get corroded or build up dirt on their surface. This can cause poor contact and will show up as continuous negative readings . To clean the pins rub them lightly with a very fine abrasive or steel wool. We use a high quality socket which if used regularly will provide itself with a self cleaning action (this will not wear out the socket)

To Clean – Wipe the thermometer with Reitech Antibacterial Wipes. To shift stubborn pieces of dirt Use a toothbrush and then clean down with the antibacterial wipes.

Never immerse the thermometer in detergent or place in a dishwasher.

Do not leave the RT200 inside fridge's, freezers or inside hot cabinets or ovens. This will damage the electronics. When changing the battery take care when refitting the battery cover to hand tighten only, the 4 screws.